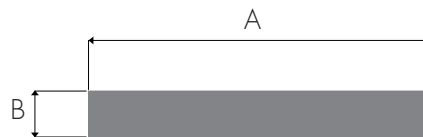


PERFILES SÓLIDOS

PLATINAS PLATES



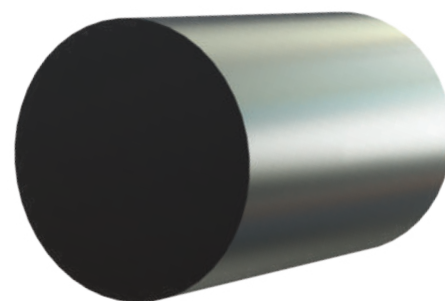
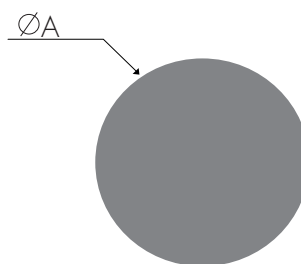
Referencia	Dimensión A		Dimensión B		Perímetro de acabado (mm)
	(mm)	(pulg)	(mm)	(Platinas)	
P003	12.7	1/2	3.1	1/8	30.74
P006	14	0.55	3	1/8	33.48
P004	15.88	5/8	3.1	1/8	35.57
P012	19	3/4	2.85	0.114	42.84
P015	22	7/8	2.5	0.100	48.48
P018	25	1	3	0.118	55.14
P020	25	1	6	1/4	61.14
P022	25.4	1	12.7	1/2	74.48
P025	31	1-1/4	3	0.118	67.14
P026	32.5	1.28	2.4	0.100	69.28
PC001	32	1-1/4	9.8	0.385	78.14
P030	38	1-1/2	2.85	0.114	80.84
P040	40.8	1.6	2.4	0.100	85.88
P047	47	1.85	1.5	0.050	95.71
P049	49	1.93	2.4	0.100	102.28
P074	74	2.9	1.5	0.05	150.48
P056	86	3.39	3.15	1/8	177.44
P070	152.4	6	12.7	1/2	328.48
CEL004	97.5	3 27/32	3.1	1/8	200.77

*Acabados de nuestros perfiles en pintura electrostática y sublimado, ver colores de referencia en la página 51.

* Finishes of our profiles in electrostatic and sublimated paint, see reference colors on page 51.

BARRAS REDONDAS

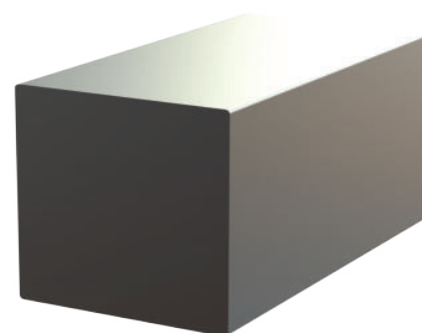
ROUND BARS



Referencia	Dimensión A		Perímetro de acabado (mm)	Longitud máxima (mts)
	(mm)	(pulg)		
R004	7.94	5/16	24.94	6
R005	9.53	3/8	29.92	6
R007	12.7	1/2	39.89	6
R008	15.88	5/8	48.88	6
R009	19.05	3/4	59.84	6
R010	22.22	7/8	68.82	6
R011	25.4	1	79.79	6
R2773	27	1.063	84.82	6
R028	28	1.023	87.96	6
R030	30	1.096	94.24	6
R019	31.75	1-1/4	99.75	6
R003	38.1	1-1/2	119.69	5
R040	40	1.575	125.66	4
R2569	44.45	1-3/4	139.64	3
R015	50.8	2	159.59	3
R044	63.5	2-1/2	201.06	1.2
R064	64	2.520	201.06	1.2
R074	74	2.913	232.47	1
R024	76.2	3	239.29	1
R082	82.55	3-1/4	259.34	0.9
R023	88.9	3-1/2	279.29	0.8
R018	101.6	4	319.19	0.5
R027	127	5	398.98	1
R017	6.35	1/4	19.95	6
R006	11.11	7/16	34.91	6
R013	28.57	1.1/8	86.76	6
R020	57.15	2.1/4	179.54	1.5
R069	69.85	2.3/4	219.44	1

BARRAS CUADRADAS

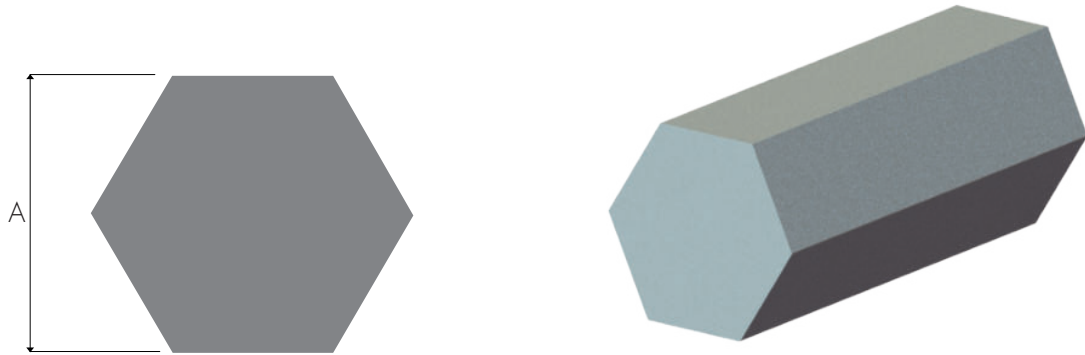
SQUARE BARS



Referencia	Dimensión A		Perímetro de acabado (mm)	Longitud máxima (mts)
	(mm)	(pulg)		
C003	6.35	1/4	24.88	6
C005	12.7	1/2	49.94	6
C006	15.87	5/8	62.62	6
C007	19.05	3/4	75.34	6
C009	25.4	1	100.74	6
C011	38.1	1-1/2	151.54	4
C012	50.8	2	202.34	2
C001	4.76	3/16	18.52	6
C002	1.14	9/32	28.06	6
C013	7.94	5/16	31.24	6
C014	9.53	3/8	37.60	6
C015	11.11	7/16	43.92	6
C016	17.46	11/16	43.92	6
C017	22.22	7/8	88.36	6
C018	31.75	1.1/4	88.36	6
C019	44.45	1.3/4	177.28	2.5

BARRAS HEXAGONALES

HEXAGONAL BARS



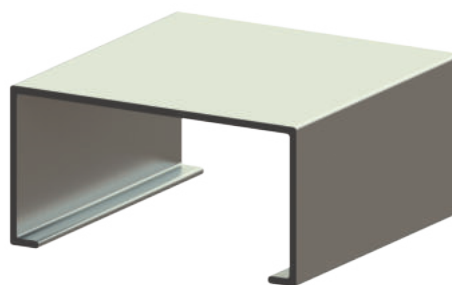
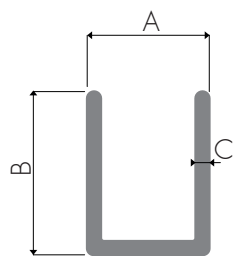
Referencia	Dimensión A		Perímetro de acabado (mm)	Longitud máxima (mts)
	(mm)	(pulg)		
H005	9.53	3/8	32.82	6
H002	15.88	5/8	54.82	6
H003	19.05	3/4	65.80	6
H006	22.22	7/8	76.78	6
H004	25.4	1	87.79	6
H015	28.57	1.1/8	151.54	6
H009	31.75	1.1/4	109.79	6
H38	38.10	1.1/2	131.79	4.5
H44	1.3/4	1.3/4	153.79	3
H050	50.80	2	31.24	2

*Acabados de nuestros perfiles en pintura electrostática y sublimado, ver colores de referencia en la página 51.

* Finishes of our profiles in electrostatic and sublimated paint, see reference colors on page 51.

CANALES

CHANNEL

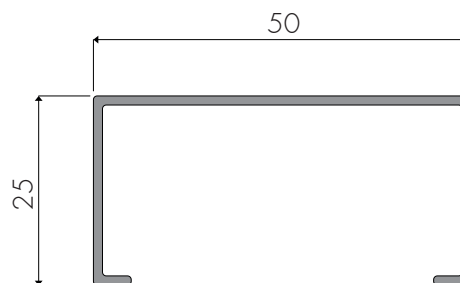


Referencia	Dimensión A		Dimensión B		Dimensión C (mm)	Perímetro de acabado (mm)
	(mm)	(pulg)	(mm)	(pulg)		
U068	9.52	3/8	12.7	1/2	1.06	66.43
U074	12.7	1/2	12.7	1/2	0.8	73.35

CANAL DE 2" X 1"

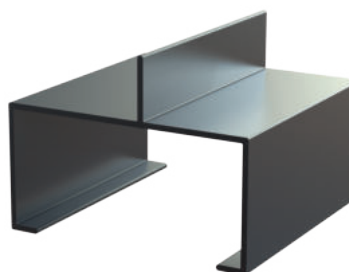
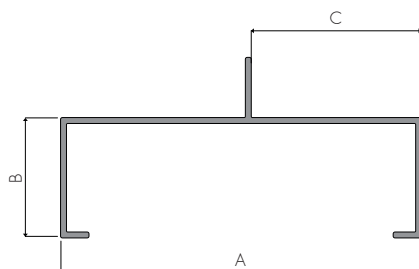
U067 Perímetro de acabado(mm): 210.22

Finishing perimeter



CANALES CON ALETA

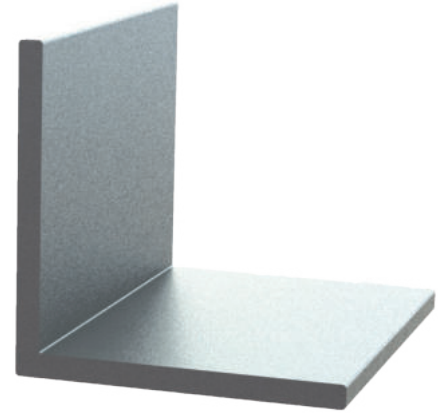
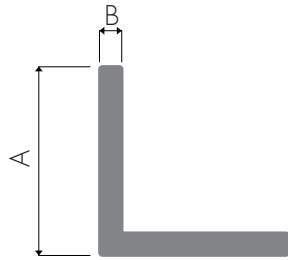
FINNED CHANNELS



Referencia	Dimensión A		Dimensión B		Dimensión C (mm)	Perímetro de acabado (mm)
	(mm)	(pulg)	(mm)	(pulg)		
U066	50	2	25	1	20.86	238.54
U089	50	2	25.4	1	9	238.65
U078	76.2	3	25.4	1	36	255.9

ÁNGULOS DE LADOS IGUALES

ANGLES OF EQUAL SIDES



Referencia	Dimensión A		Dimensión B (mm)	Perímetro de acabado (mm)
	(mm)	(pulg)		
A001	12.7	1/2	0.9	49.7
A059	16.7		0.9	65.56
A006	19.05	3/4	3.17	75.34
A009	25.4	1	1.2	100.74
A011	25	1	3	99.03
A012	25.4	1	4.5	100.42
A015	31	1-1/4	2.8	122.81
A019	38	1-1/2	2.85	150.81
A027	50.8	2	2.85	202.02
A032	76.2	3	3.18	300.5

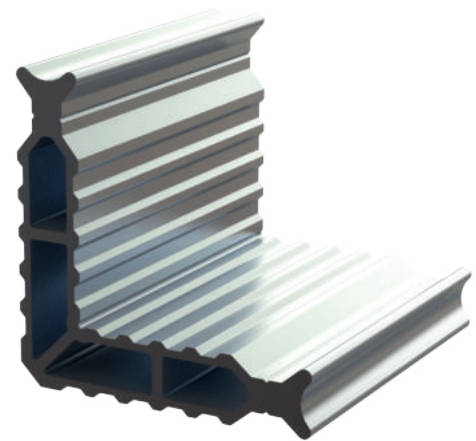
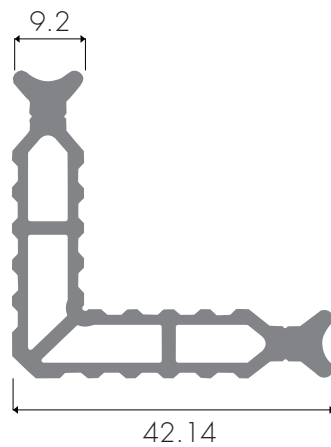
*Acabados de nuestros perfiles en pintura electrostática y sublimado, ver colores de referencia en la página 51.
 * Finishes of our profiles in electrostatic and sublimated paint, see reference colors on page 51.

ÁNGULOS ESPECIALES DE UNIÓN

EQUAL SIDE ANGLES

PERFIL AUTOENSAMBLE BASCULANTE 3831

- **ESC001** Perímetro de acabado (mm): 185
Finishing perimeter



TEES

CEILING PROFILES

- **D028** Perímetro de acabado (mm): 80.62
Finishing perimeter

